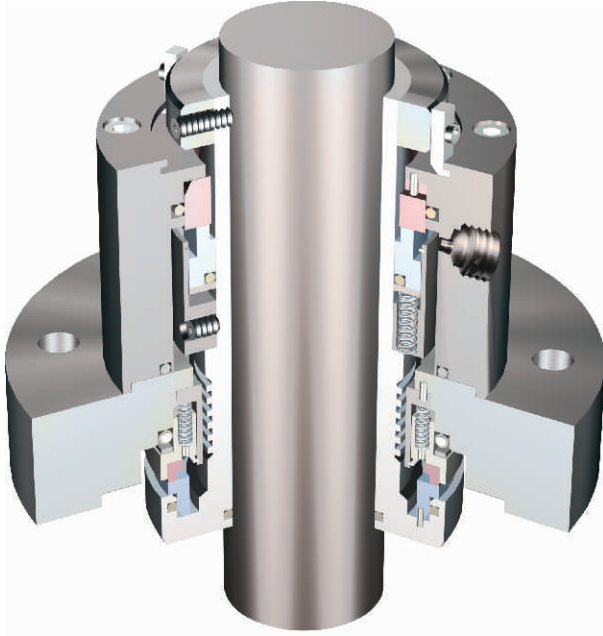


SCS/SSUV

DOUBLE CARTRIDGE SEAL



- INBOARD SEAL DESIGNED TO HANDLE SLURRY
- CAN BE USED FOR HIGHER SPEEDS
- INTEGRAL PUMPING RING OPTION
- GUIDED SEALANT FLOW FOR BETTER HEAT DISSIPATION
- SPECIAL DESIGN FOR FLOATING SHAFTS WITH LINEAR EXPANSION
- AVAILABLE WITH / WITHOUT BEARING

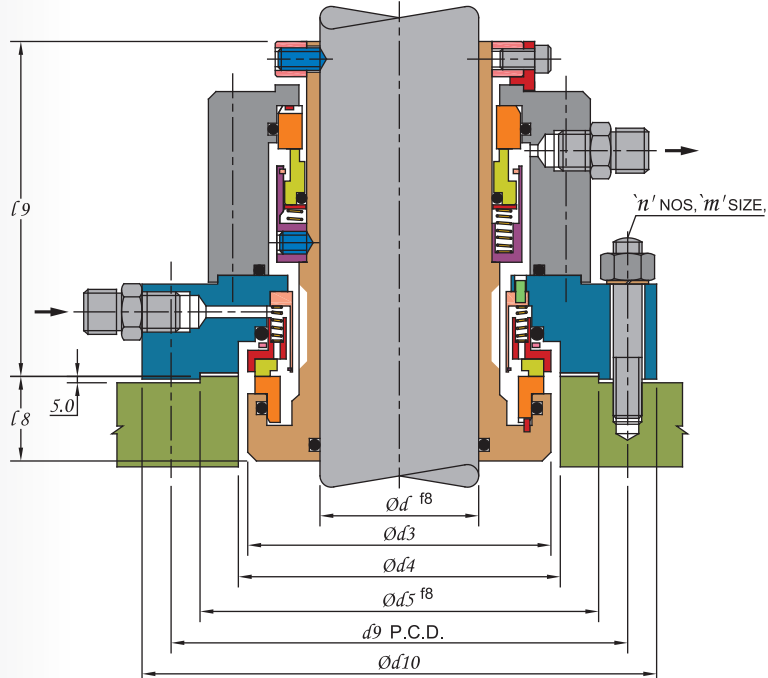
APPLICATIONS :

- FLOODED REACTORS
- TOP & BOTTOM ENTRY AGITATORS
- LUMP BREAKERS & CHOPPERS
- HORIZONTAL REACTORS & MIXERS
- GRINDING MILLS
- AGITATED FILTER DRYERS
- PC AUTOCLAVES



SEAL FOR BALL MILL

INSTALLATION DIMENSIONS



SHAFT DIA. d'	$d3$	$d4$	$d5$	$d9$ P.C.D.	$d10$	$l8$	$l9$	m	n
25.0	58.7	75.0	104.77	140.0	178.0	25.5	100.0	M16	4
30.0	65.1	75.0	104.77	140.0	178.0	25.5	100.0	M16	4
35.0	68.3	75.0	104.77	140.0	178.0	25.5	100.0	M16	4
40.0	69.5	75.0	104.77	140.0	178.0	27.0	102.0	M16	4
45.0	77.8	85.0	104.77	140.0	178.0	27.0	102.0	M16	4
50.0	90.5	95.0	127.00	152.4	190.0	30.0	105.0	M16	4
55.0	90.5	95.0	127.00	152.4	190.0	30.0	105.0	M16	4
60.0	97.0	102.0	127.00	152.4	190.0	30.0	105.0	M16	4
70.0	103.0	110.0	157.16	190.0	225.0	30.0	105.0	M16	8
80.0	119.0	127.0	157.16	190.0	225.0	32.0	106.0	M16	8
85.0	125.0	130.0	157.16	190.0	225.0	32.0	106.0	M16	8

Consult HI-FAB for higher shaft sizes

LIMITING PARAMETERS

PRESSURE
FULL VACUUM TO 10 BAR

TEMPERATURE
- 40° C TO 200° C*

SPEED
2 m/sec

* For higher temperatures consult HI-FAB

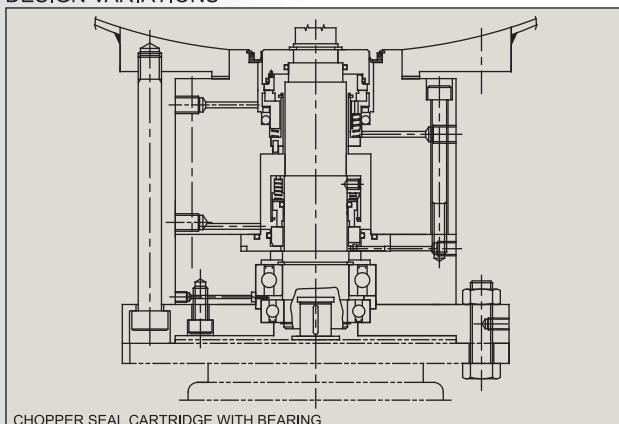
MATERIALS

METAL PARTS
SS316
SPECIAL MOC ON REQUEST

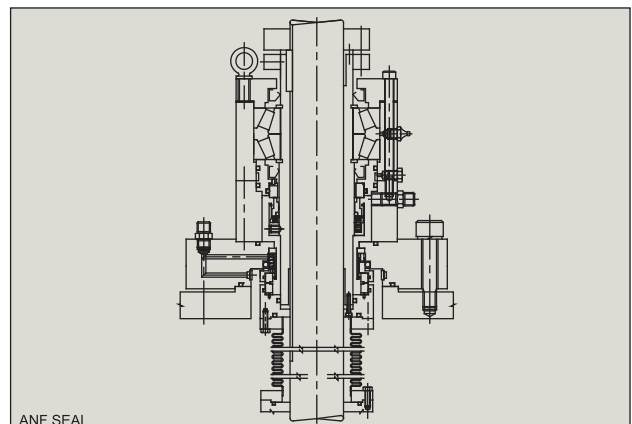
SEAL FACES	
ROTARY	STATIONARY
CARBON	SIC, TC
SIC	

ELASTOMERS
VITON, PTFE, FEP
FKM, EPR, AFLAS

DESIGN VARIATIONS



CHOPPER SEAL CARTRIDGE WITH BEARING



ANF SEAL

Due to continuous improvement specifications & dimensions may change without prior notice